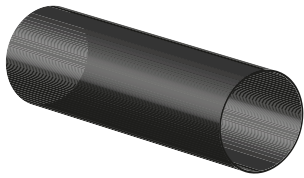
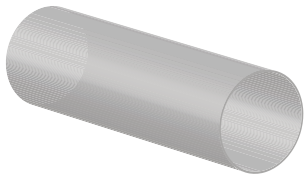


## Polyethylene pipe

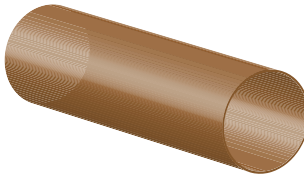
Series :  
1012 - 1014 - 1016 - 1020 - 1025



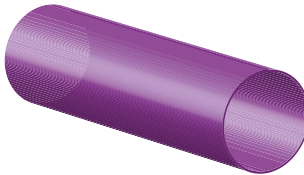
black



grey



brown



violet for non-potable water

## Pipe specifications

Nominal diameter	Outside diameter	Inside diameter	Wall thickness		Pressure max Bar
	mm		MIL	mm	
12	12.00	10.00	40	1.00	3.00
		9.80	44	1.10	3.50
		9.60	48	1.20	<b>4.00</b>
		8.00	80	2.00	<b>6.00</b>
14	14.00	12.00	40	1.00	3.00
		13.80	44	1.10	3.50
		13.60	48	1.20	<b>4.00</b>
		10.00	80	2.00	<b>6.00</b>
16	16.00	14.20	36	0.90	2.50
		14.00	40	1.00	2.50
		13.80	44	1.10	3.00
		13.60	48	1.20	3.00
		13.40	52	1.30	3.30
		13.20	56	1.40	<b>4.00</b>
20	20.00	12.80	64	1.60	<b>6.00</b>
		18.20	36	0.90	2.00
		18.00	40	1.00	2.50
		17.80	44	1.10	3.00
		17.60	48	1.20	3.50
		17.40	52	1.30	3.50
		17.20	56	1.40	3.50
		17.00	60	1.50	4.00
25	25.00	16.80	64	1.60	<b>4.00</b>
		16.60	68	1.70	<b>6.00</b>
		22.60	48	1.20	4.20
		22.40	52	1.30	4.20
		22.20	56	1.40	4.80
		22.00	60	1.50	4.80
21.80	64	1.60	5.00		
21.60	68	1.70	<b>4.00</b>		
20.60	88	2.20	<b>6.00</b>		

made with 100% virgin raw material

