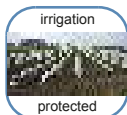
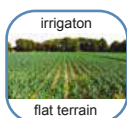


Drip tape with labyrinth compact dripper

non PC



series:
2216
2222
2225
2229



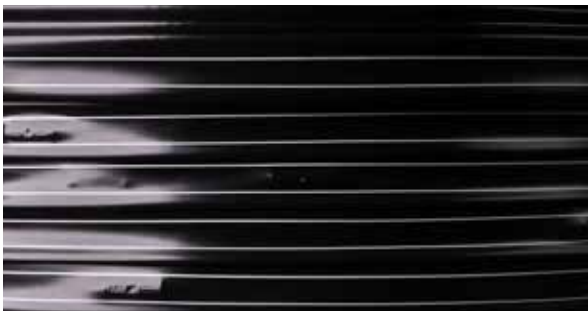
Drip tape with labyrinth compact dripper



Series:

2216 - 2222 - 2225 - 2229

- Made with 100% virgin raw material
- Suitable for open field seasonal and multi-seasonal application
- Resistant to UV, acid and common agricultural chemicals
- Mini dripper with excellent resistance to obturation thanks to the wide labyrinth and an extensive filtering surface



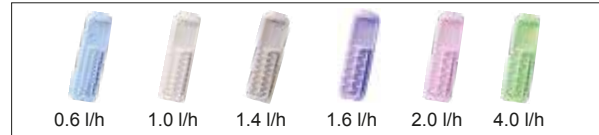
Drip tape specification

Diametro nominale	Diametro interno	Diametro esterno	Spessore		Pressione max
	mm	mm	MIL	mm	Bar
16	16.10	16.30	4	0.10	0.50
		16.36	5	0.13	0.60
		16.40	6	0.15	0.80
		16.46	7	0.18	0.90
		16.50	8	0.20	1.00
		16.60	10	0.25	1.20
		16.70	12	0.30	1.50
		16.86	15	0.38	1.80
22	22.20	17.00	18	0.45	2.00
		22.50	6	0.15	0.60
		22.56	7	0.18	0.70
		22.60	8	0.20	0.80
		22.70	10	0.25	1.00
		22.80	12	0.30	1.20
		22.96	15	0.38	1.50
25	25.00	23.10	18	0.45	1.80
		25.40	8	0.20	0.80
		25.50	10	0.25	0.90
		25.60	12	0.30	1.10
		25.76	15	0.38	1.30
		25.90	18	0.45	1.50



Dripper specification

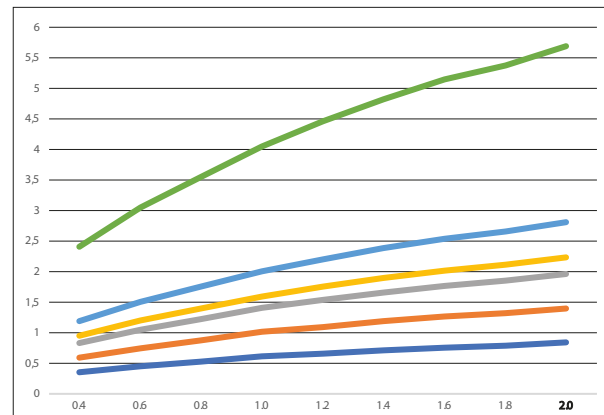
Dripper flow rate: (l/h) 0.6 - 1.0 - 1.4 - 1.6 - 2.0 - 4.0
Standard spacing : (cm) 10 - 15 - 20 - 25 - 30 - 33 - 40 - 50
Special spacing : groups by request





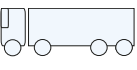


Dripper data

Nominal flow rate	l/h	0,60	1,00	1,40	1,60	2,00	4,00
Coefficient of variation CV	%	2,85	2,52	2,62	1,80	2,74	5,00
Exponent	X	0,41	0,43	0,42	0,47	0,45	0,45
Maximum working pressure	bar	2,0	2,0	2,0	2,0	2,0	2,0
Minimum working pressure	bar	0,5	0,5	0,5	0,5	0,5	0,5
Dripper flow path	Depth	mm	0,75	0,55	0,75	0,65	0,65
	Width	mm	0,33	0,60	0,60	0,69	0,85
	Length	mm	32	22	22	40	22
Filtration degree	mesh	150	150	120	120	120	120
	micron	100	100	130	130	130	130

Flow rate



Packaging and shipping

 bobbin	2.700 (m) Re. duraslim 16/8 30cm purely indicative data
 Pallet	small 32 bobbins 114x114xh190 cm *maxi 40 bobbins 114x114xh252 cm
 truck	*22 maxi pallets 880 bobbins
 container	10 small pallets 320 bobbins
 container	*20 maxi pallets 800 bobbins

*only full load

Fittings

Derivation with grommet drill hole.: 10 mm		4657	17
Derivation with grommet drill hole: 16mm		4659	22
Male thread starter		4660	29
		4670	3/4" x 17
		4672	3/4" x 22
PE starter valve with grommet		4673	3/4" x 29
		4619	17
LAY FLAT starter valve		4618	22
		4613	17
Coupling		4612	22
		4661	17 x 17
		4662	22 x 22
		4663	29 x 29

For other fittings see durafittings

Maximum recommended length on flat terrain (m) - E.U. 85%

Inside diameter (mm)	Flow rate (l/h)	Spacing (cm)														Working pressure (BAR)
		10	15	20	25	30	33	40	50	60	75	80	90	100		
16.10	0.6	155	211	260	305	347	371	424	495	559	650	679	734	788	0.6	
		156	213	263	309	351	376	430	501	567	659	688	744	799	1.0	
		157	214	265	311	354	379	433	505	572	665	694	751	806	1.5	
	1.0	114	155	192	225	256	274	313	365	413	480	501	542	581	0.6	
		115	157	194	228	259	277	317	370	418	486	508	549	589	1.0	
		116	158	195	229	261	279	319	373	422	491	512	554	594	1.5	
	1.4	93	126	156	184	209	223	255	298	337	392	409	442	474	0.6	
		94	128	158	185	211	225	258	301	340	396	414	447	480	1.0	
		95	129	159	187	213	228	260	304	344	400	418	452	485	1.5	
	1.6	83	108	131	151	170	181	205	237	267	308	322	347	371	0.6	
		97	126	152	176	198	210	238	276	310	359	374	403	432	1.0	
		99	129	156	180	203	216	244	283	318	368	383	414	443	1.5	
	2.0	39	52	65	76	87	93	106	124	140	162	170	184	197	0.6	
		64	87	108	127	144	154	176	206	233	271	283	306	329	1.0	
		76	104	129	151	172	184	211	246	278	324	338	366	393	1.5	
	4.0	47	61	74	85	96	102	115	134	150	173	181	195	209	0.6	
		52	68	82	95	107	114	129	149	167	194	202	218	233	1.0	
		53	69	83	97	109	115	131	152	170	197	206	221	237	1.5	
	22.20	0.6	256	352	437	516	589	630	722	845	958	1115	1166	1262	1355	0.6
			258	355	441	521	595	637	731	855	970	1130	1181	1279	1373	1.0
			259	356	443	523	597	640	733	858	973	1133	1185	1283	1377	1.2
1.0		188	259	322	380	434	465	533	623	706	823	860	931	1000	0.6	
		190	261	325	384	439	470	539	631	715	834	871	943	1013	1.0	
		191	262	326	385	440	472	541	633	719	838	875	948	1018	1.2	
1.4		153	211	262	310	354	379	434	508	576	671	702	760	816	0.6	
		154	213	265	313	357	382	439	513	583	679	710	769	825	1.0	
		155	213	266	314	359	384	440	516	585	682	712	771	829	1.2	
1.6		144	188	227	262	295	314	355	411	462	534	557	601	644	0.6	
		168	218	263	304	342	364	413	477	537	620	647	698	748	1.0	
		170	221	266	308	346	368	417	482	543	627	654	706	756	1.2	
2.0		64	88	109	129	147	157	180	211	239	279	291	316	339	0.6	
		105	145	181	214	244	261	300	352	399	465	486	526	565	1.0	
		116	161	200	237	271	290	333	390	443	516	539	585	628	1.2	
4.0		91	118	142	165	185	197	223	258	290	336	350	378	405	0.6	
		91	119	143	166	186	198	224	260	292	338	352	380	407	1.0	
		100	130	156	181	203	216	245	283	319	368	384	415	444	1.2	
25.00		0.6	307	424	529	625	714	766	878	1028	1167	1361	1422	1541	1655	0.6
			309	427	534	631	721	773	888	1041	1182	1379	1441	1562	1677	1.0
		1.0	226	312	390	461	527	564	648	758	861	1004	1049	1137	1221	0.6
	227		315	393	465	532	571	655	768	872	1017	1062	1152	1237	1.0	
	1.4	184	254	317	375	429	460	528	618	702	819	856	927	996	0.6	
		185	256	320	379	433	464	533	625	709	828	865	938	1007	1.0	
	1.6	177	230	277	321	361	384	435	503	566	655	682	736	789	0.6	
		206	267	322	373	419	446	506	585	658	761	793	856	916	1.0	
	2.0	76	105	132	156	178	191	219	257	292	341	356	385	414	0.6	
		126	174	218	259	296	317	365	428	486	567	593	643	690	1.0	
	4.0	100	130	156	181	203	216	245	283	319	368	384	415	444	0.6	
		111	145	174	202	227	241	274	316	356	411	429	463	496	1.0	